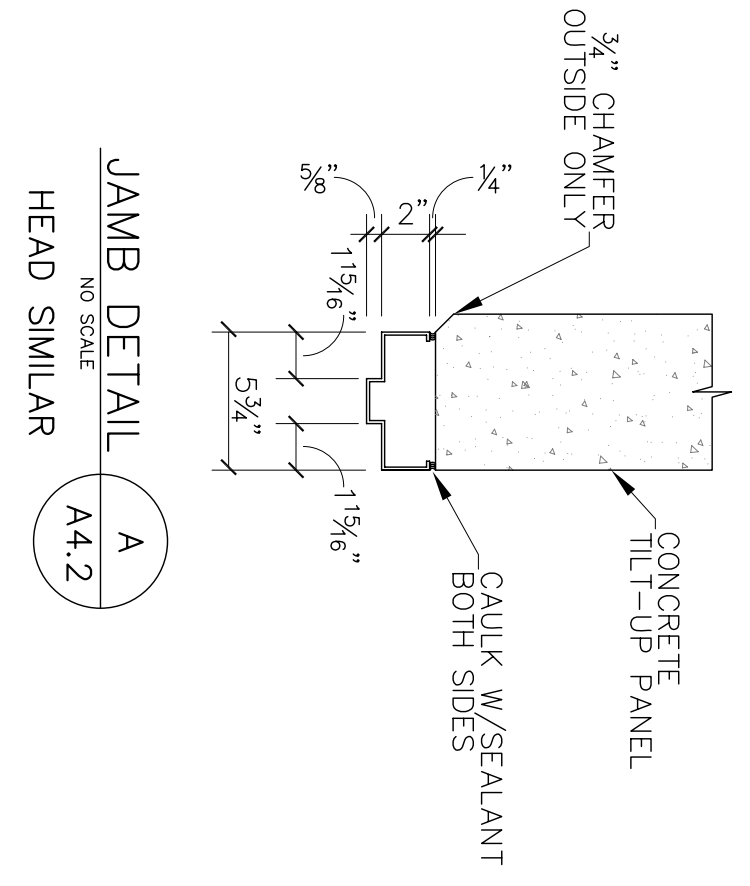


ROOM FINISH SCHEDULE														
ROOM NO.	ROOM NAME	FLOOR	BASE			WALLS			CEILING					
			MATL	FINISH	HT	NORTH	SOUTH	EAST	WEST	MATL	FINISH	HT		
101	FIRE RISER ROOM	10	20	31	50	31	50	30	30	31	50	40	40	
102	WAREHOUSE	10	20	30	30	30	30	30	30	30	30	40	40	

MATERIAL FINISHES					
FLOORS	BASE	WALLS	CEILING	FINISH MATERIALS	REMARKS
MARK	MARK	MARK	MARK	MARK	
10	EXPOSED CONCRETE	20	NONE	30	EXPOSED CONSTRUCTION
				31	5/8" TYPE "X" GYP BOARD
				50	COORDINATE W/STONE FRONT

DOOR SCHEDULE									
OPENING NO.	OPENING SIZE	DOOR THICK.	DOOR TYPE	DOOR LABEL	DOOR FINISH	FRAMES		REMARKS	
						HEAD	JAMB		
101	6'-0" X 8'-0"	1 1/2"	B		ALUM. W/TEMP. GLASS	PER MFG. DETAILS		PROVIDE COMPLETE OPERATING PACKAGE	
102	3'-0" X 7'-0"	1 1/2"	A		PAINT	A	A	PAINT	
103	8'-0" X 7'-0"	1 1/2"	A		PAINT	A	A	PAINT	

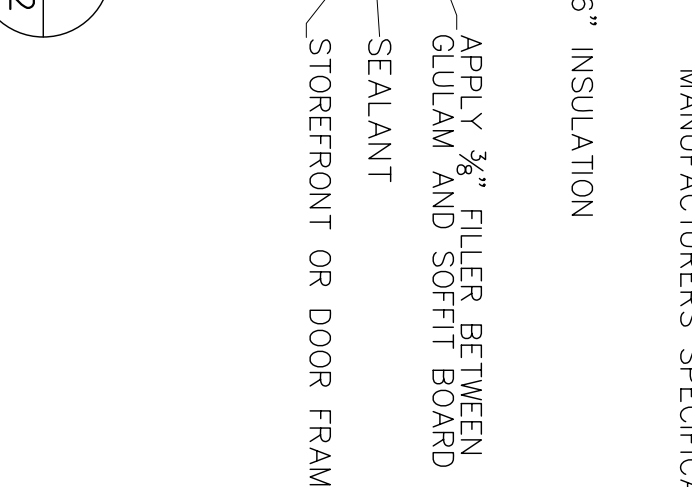
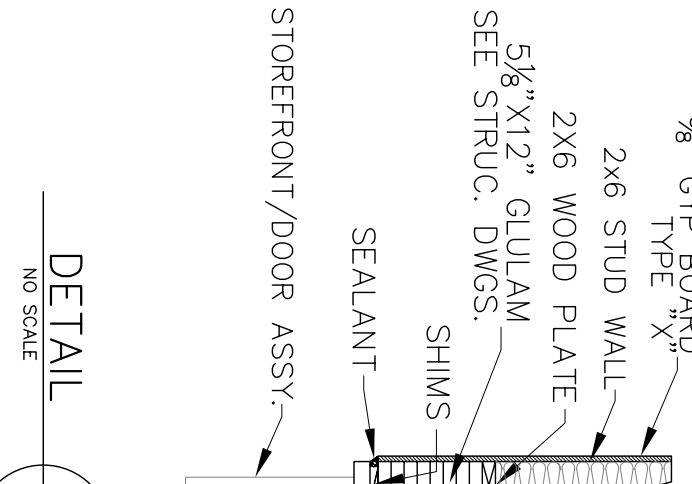
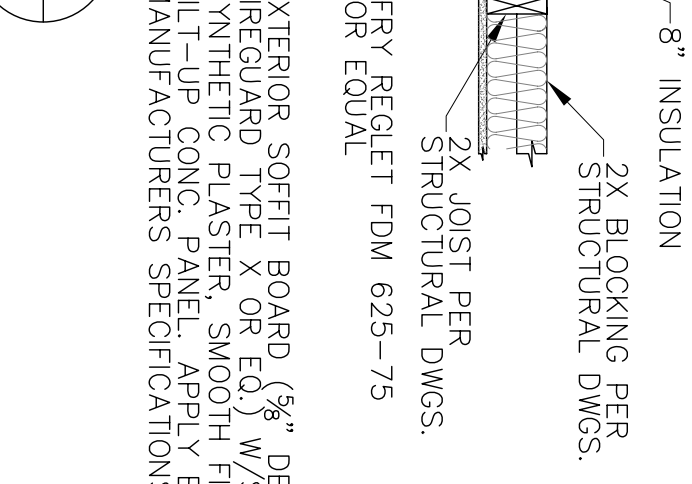
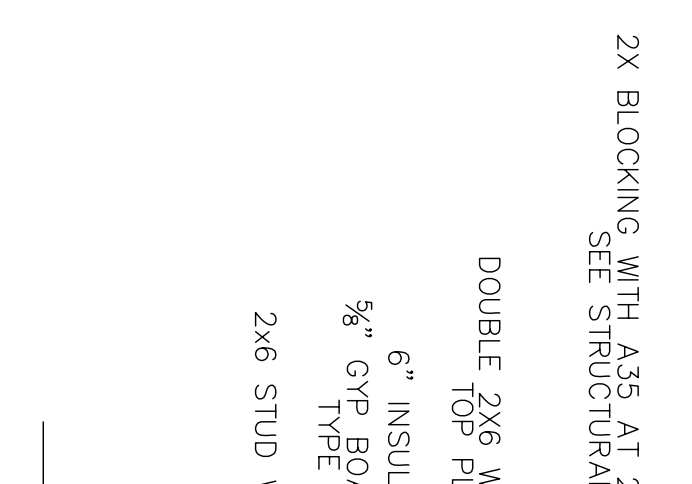
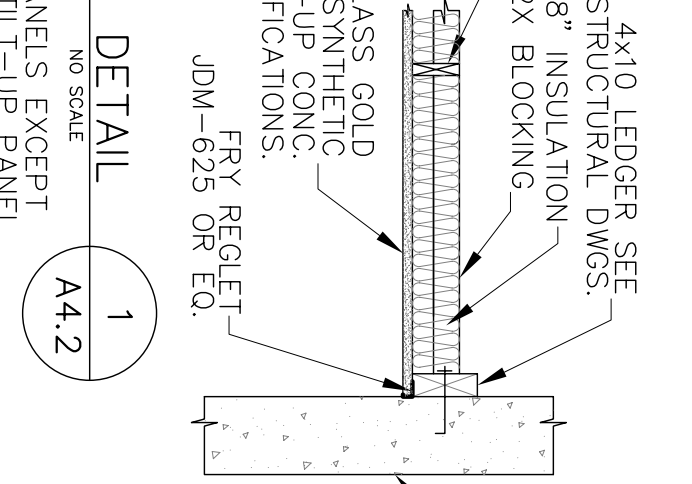
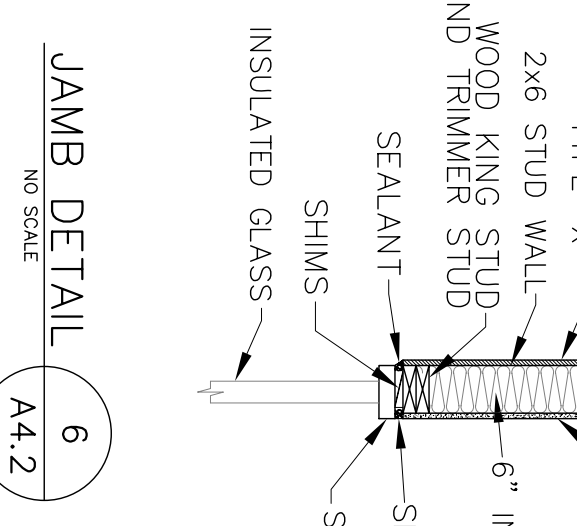
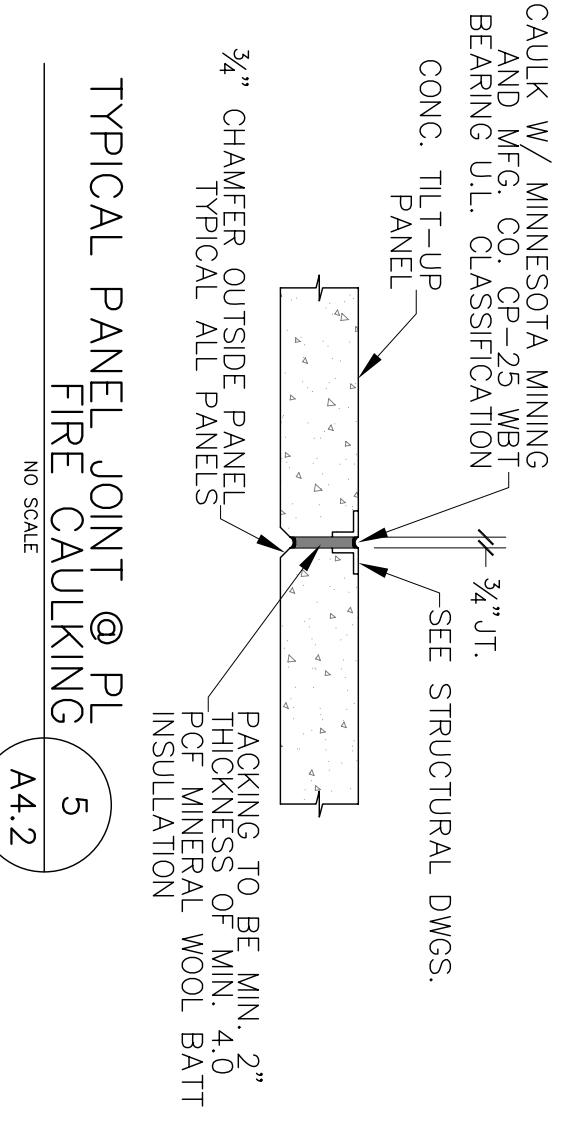
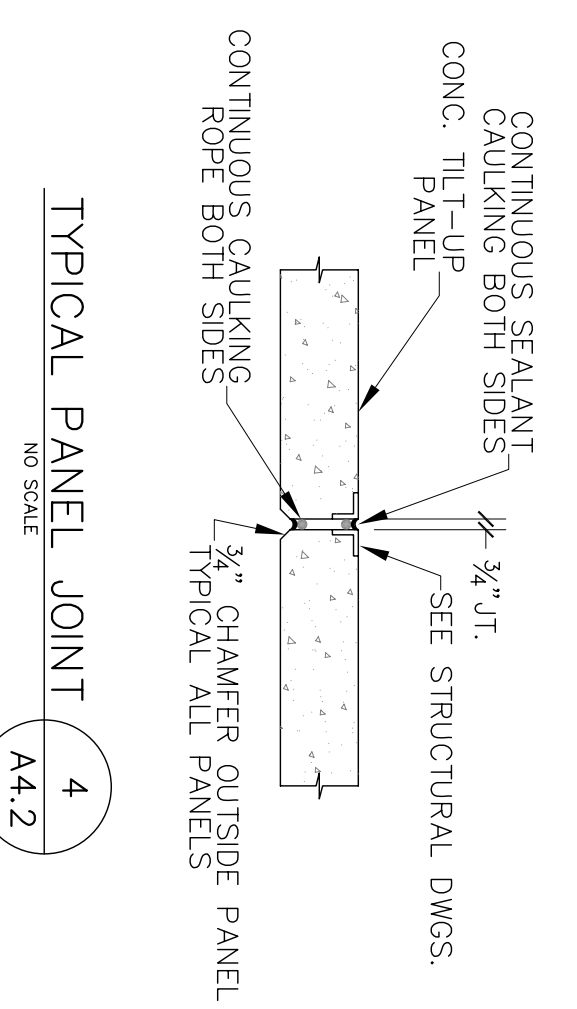
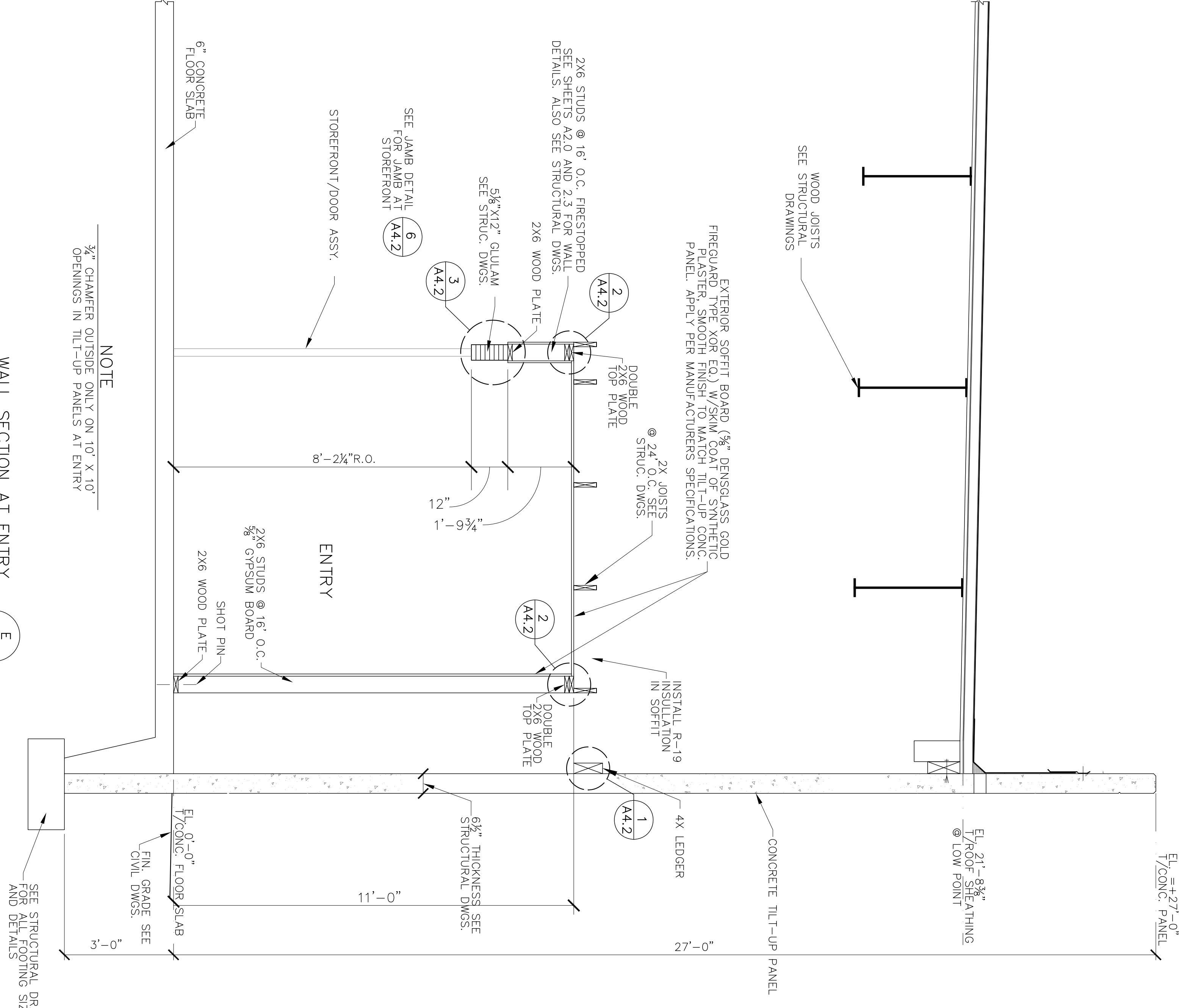
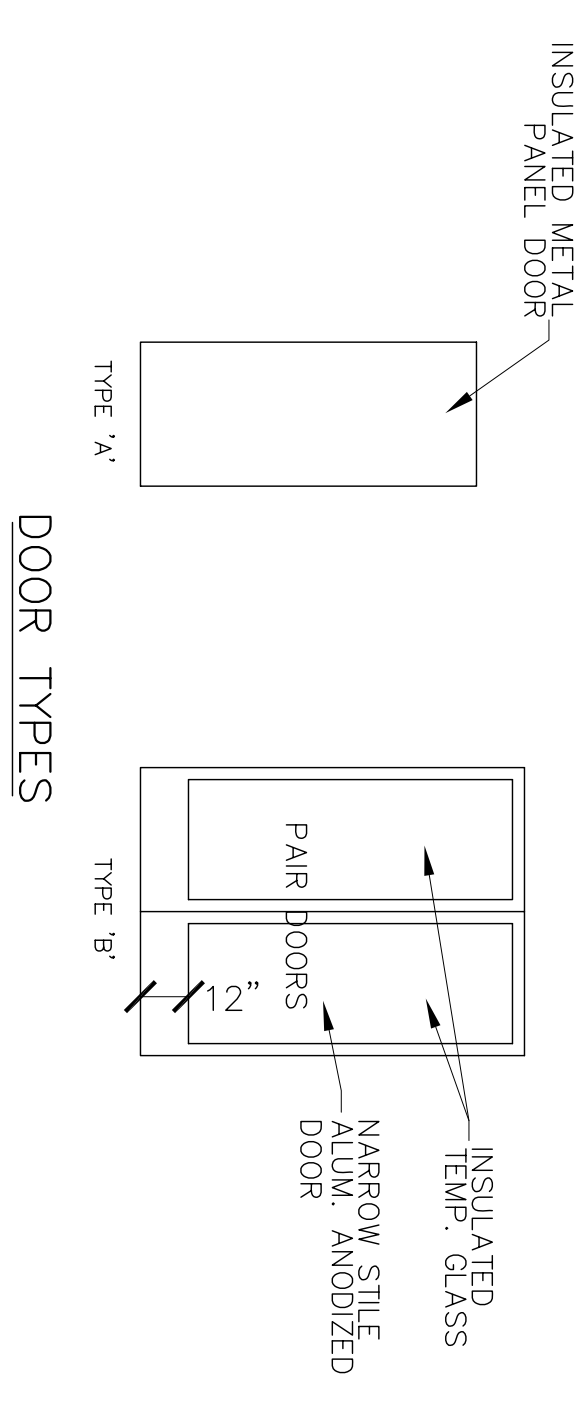


- DOOR TYPES/HARDWARE**
1. ALL FRAMES TO BE PAINTED OUT TO MATCH WALLS. (SEMI-GLOSS (3) COATS)
 2. ALL METAL DOORS TO RECEIVE (3) COATS OIL BASE PAINT.
 3. PROVIDE NECESSARY HARDWARE MINIMUM PER 1/2 BUTTS PER DOOR, BRUSHED ALUMINUM HARDWARE SYSTEM (8'-0" DOORS PER 2 BUTTS PER DOOR)
 4. PROVIDE EXIT HARDWARE ON ALL DOORS EXITING FROM BUILDING. (PANO)
 5. PROVIDE PANO OR EQUAL WEATHER STRIPPING ON EXTERIOR DOORS.
 6. ALL THRESHOLDS TO BE ALUMINUM SET IN FULL BED OF MASTIC AND TO BE "BARRIER FREE"

GLASS SPECIFICATIONS

SAFETY GLAZING: 1" VERSALUX BLUE 2000R (2) SOLARBAN 60 (3) OUT; 1/2" VERSALUX BLUE 2000R (2) TEMPERED 3/4" ALUMINUM SPACER BAR NS; 3/4" SOLARBAN 60 (3) CLEAR TEMPERED OR EQUAL.

MANUFACTURER TO PROVIDE NECESSARY WARRANTIES AND GUARANTEES. PROVIDE GLASS SAMPLES FOR ARCHITECTURAL APPROVAL, ALONG WITH ANY MFG. BROCHURES AND SHOP DRAWINGS, GLAZING SEALANTS/COMPOUNDS.



REV	DATE	BY	REVISION	APPROVAL
5	06/09	AKN	ADD GLASS SPECIFICATION	

A K NIELSEN
Consulting Engineers
2900 SOUTH RANCHO DRIVE STE. 102
LAS VEGAS, NEVADA 89102
TEL. (702) 876-9905

MMJ INVESTMENT WAREHOUSE
5637 SOUTH CAMERON ST. STE. 110 TEL: (702) 228-5982
LAS VEGAS, NEVADA 89118 FAX: (702) 367-8807

ENTRY SECTION, DOOR & ROOM FINISH SCHEDULES & MISC. DETAILS WAREHOUSE/OFFICE
APN 177-02-201-013
1519 HELM DRIVE
LAS VEGAS, NEVADA 89119

JOB No. 2008-17
DESIGNED: AKN
DRAWN: AKN 02/09
CHECKED:
SHEET A4.2 OF 11 SHEETS